

PHARMACOGENETIC (PGx) TESTS FOR HIV

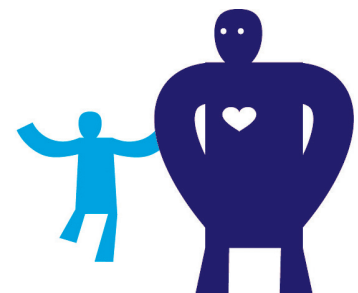
Adverse drug reactions are multifactorial in origin, but for some drugs in HIV, an underlying genetic component may contribute to the risk of developing toxicity. Screening for genetic markers associated with a particular side-effect may identify some individuals predisposed to toxicity.

HIV PGx FROM LAB21

Drug	Test
Abacavir	HLA-B*5701 polymorphism
Atazanavir	UGT1A1*28 polymorphism
Efavirenz	CYP2B6 position 516 G>T polymorphism

HLA-B*5701: HLA-B*5701 testing is recommended to help identify patients with a lower risk of developing abacavir hypersensitivity.^{1,2}

UGT1A1*28: UGT1A1*28 testing before initiation of antiretroviral therapy containing atazanavir may aid in identifying individuals at risk of hyperbilirubinaemia.³



CYP2B6: CYP2B6 516 G>T testing may be able to identify patients at higher risk of central nervous system side effects following standard dosing of Efavirenz.⁴

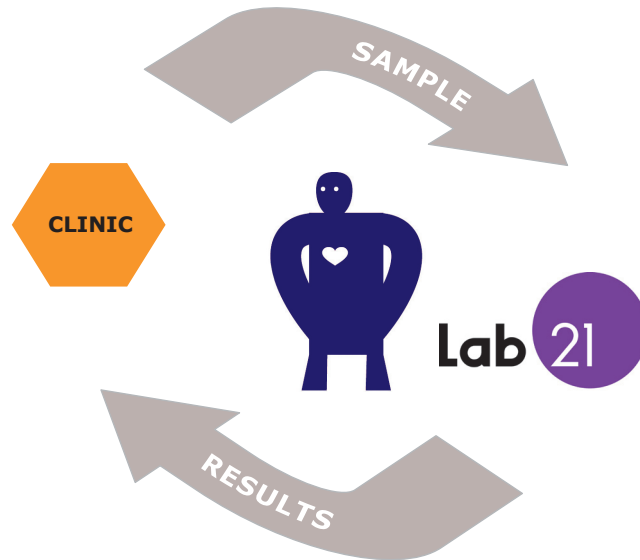
REFERENCES

- British HIV Association guidelines for the treatment of HIV-1-infected adults with antiretroviral therapy 2008. HIV Med. 2008; 9: 563-608
- Guidelines for the Clinical Management and Treatment of HIV Infected Adults in Europe. European AIDS Clinical Society (EACS), Madrid, 2007.
- Rotger M, Taffe P, Bleiber G et al. Gilbert syndrome and the development of antiretroviral therapy associated hyperbilirubinaemia. JID 2005; 192:1381-1386
- Haas DW, Ribaldo HJ, Kim RB et al. Pharmacogenetics of Efavirenz and central nervous system side effects: an adult AIDS Clinical Trials Group Study. AIDS 2004; 18:2391-2400.

Lab21 provides a range of HIV and Viral Hepatitis testing services

www.lab21.com

HIV PGx



TEST TURNAROUND TIME IS ONLY 5-7 WORKING DAYS

TEST REQUESTS

Please contact Lab21 Customer Service Team by phone or email

T: +44 (0)1223 395450

E: info@lab21.com

PRICING

Lab21 offers competitive pricing for HIV Pharmacogenetic testing.

SAMPLES

Please see Lab21 HIV PGx Sample Handling Instructions for information on how to collect, process and handle samples for testing.

See www.lab21.com for further information and downloads