

CancerTYPE ID®

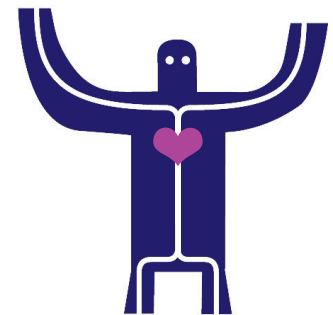
Classification of the Primary Site of Origin

CancerTYPE ID® can assist with troublesome differential diagnoses of unknown primary to identify the primary cancer site - dramatically affecting therapeutic options.

CancerTYPE ID® is a molecular cancer classification assay that measures and integrates the expression of 92 genes in formalin-fixed, paraffin embedded tumour samples. From its tumour reference data set, composed of primary and metastatic cancers of known origin (well-, moderate-, and poorly-differentiated), CancerTYPE ID® can distinguish 54 primary tumour types, representing >95% of all solid tumours.^{1, 2}

Benefits of CancerTYPE ID®:

- **Classifies 54 primary tumour types with overall sensitivity of 85% and specificity of >99%^{1, 2}**
- **Guides differential diagnosis and identification of primary cancer site**
- **Aids identification of optimal therapy**
- **Reduces diagnostic workup and associated costs**



Tumour Types Classified by CancerTYPE ID®

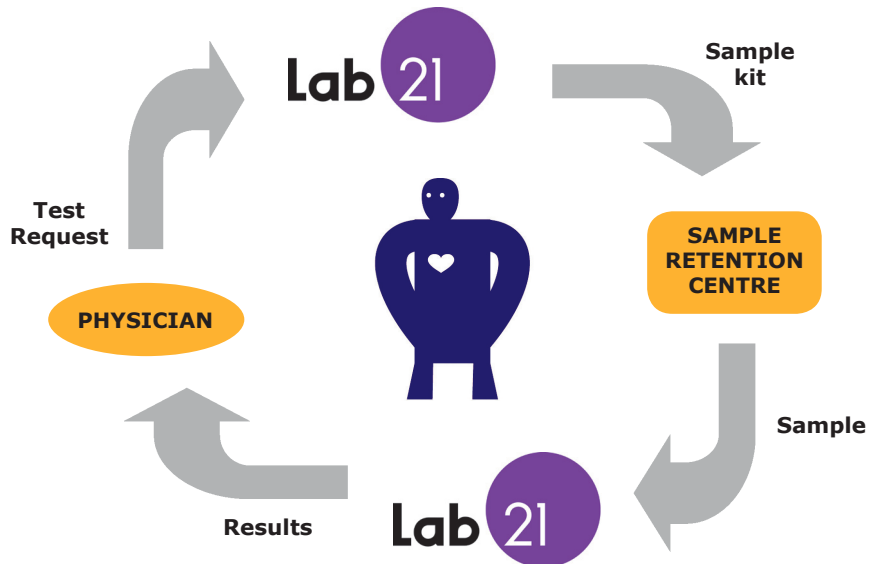
MAIN TYPE	SUBTYPE
Adrenal	Cortical carcinoma Pheochromocytoma
Bile duct	Cholangiocarcinoma
Brain	
Breast	Adeno
Cervix	Adeno Squamous cell
Endometrium	Adeno
Gallbladder	Adeno
Gastroesophageal	Adeno
Germ cell	Seminomatous Non-seminomatous
GIST	
Head & Neck	Salivary gland Squamous cell
Intestinal	Colorectal adeno Small intestine adeno

MAIN TYPE	SUBTYPE
Kidney	Clear cell Chromophobe Papillary
Liver	Hepatocellular carcinoma
Lung	Adeno Squamous cell
Lymphoma	
Melanoma	
Meningioma	
Mesothelioma	
Neuroendocrine	Small/large cell lung Pancreatic islet cell Merkel cell carcinoma GI carcinoid Lung carcinoid
Oesophagus	Squamous cell
Ovary	Clear cell adeno Endometrioid adeno

MAIN TYPE	SUBTYPE
Ovary continued	Mucinous adeno Serous adeno
Pancreas	Adeno
Prostate	Adeno
Sarcoma	Malignant fibrous histioc. Primitive neuroectoderm. Leiomyosarcoma Liposarcoma Osteosarcoma Synovial sarcoma
Sex cord stromal	
Skin	Basal cell Squamous cell
Thymus	
Thyroid	Follicular/papillary Medullary
Urinary bladder	Transitional cell Adeno Squamous cell

CancerTYPE ID® was developed and is performed by bioTheranostics, US

CancerTYPE ID®



Sample testing is performed at bioTheranostics

TYPICAL TEST TURNAROUND TIME IS 10-15 WORKING DAYS

TEST REQUESTS & ENQUIRIES

Please contact Lab21 Customer Services

T: 0845 6778109 (UK), +44 1223 395450 (Intl)

E: cupcheck@lab21.com

COMPREHENSIVE SERVICE

Lab21 manages:

- Test Requests and Customer Support
- Liaison with Sample Retention Sites
- Sample Logistics
- Reporting of results

References:

1. Ma, et al. Molecular Classification of Human Cancers Using a 92-Gene Real Time Quantitative Polymerase Chain Reaction Assay. Archives of Pathology and Laboratory Medicine, 130: 465-473, 2006.
2. Data based on 2206 samples, bioTheranostics file, available on request.